



Verification Report

Applicant : Shenzhen Huafurui Technology Co., Ltd.
Address : Unit 1401 & 1402, 14/F, Jinqi Zhigu Mansion (No. 4 Building of Chongwen Garden), Crossing of the Liuxian Street and Tangling Road, Taoyuan Street, Nanshan District, Shenzhen, P.R. China

Report on the submitted samples said to be:

Sample Name(s) : Smartphone
Trade Mark : KINGKONG 8
Part No. : CUBOT
Sample Received Date : July 25, 2023
Testing Period : July 25, 2023 ~ July 31, 2023
Date of Report : August 01, 2023
Testing Location : 901, No.40 Building, Xialang Industrial Zone, Heshuikou Community, Matian Street, Guangming District, Shenzhen, Guangdong, China
Results : Please refer to next page(s).

TEST REQUEST	CONCLUSION
As specified by client, based on the performed tests on submitted sample, the result of Lead(Pb), Cadmium(Cd), Mercury(Hg), Hexavalent Chromium(Cr(VI)), PBBs, PBDEs, Dibutyl Phthalate(DBP), Butylbenzyl Phthalate(BBP), Di-2-ethylhexyl Phthalate(DEHP) and Diisobutyl phthalate(DIBP) content comply with the limits set by RoHS Directive 2011/65/EU with amendment (EU) 2015/863.	PASS

Signed for and on behalf of LCS

Lily dan



**A. EU RoHS Directive 2011/65/EU and its amendment directives**

Test method: Refer to IEC 62321-1:2013&IEC 62321-2:2021&IEC 62321-3-1:2013, Screening by X-ray Fluorescence Spectroscopy (XRF).

Test result(s):

Sample No.	Sample Description	Screening Result(s)						Date of sample submission/ Resubmission
		Cd	Pb	Hg	Cr [▼]	Br [▼]		
						PBBs	PBDEs	
1	Black soft plastic outer skin	BL	BL	BL	BL	BL	BL	2023-07-25
2	Silver metal buttons with gray coating	X	BL	BL	BL	/	/	2023-07-25
3	Silver metal buttons with orange coating	BL	BL	BL	BL	/	/	2023-07-25
4	Black plated silver metal screw	BL	BL	BL	X	/	/	2023-07-25
5	Silver metal plate with gray coating	BL	BL	BL	BL	/	/	2023-07-25
6	Silver metal buttons with gray coating	BL	BL	BL	BL	/	/	2023-07-25
7	Grey cloth adhesive	BL	BL	BL	BL	BL	BL	2023-07-25
8	Black plastic film	BL	BL	BL	BL	BL	BL	2023-07-25
9	Grey foam adhesive	BL	BL	BL	BL	BL	BL	2023-07-25
10	Black/Yellow FPC	BL	BL	BL	BL	BL	BL	2023-07-25
11	Silver metal shell	BL	BL	BL	X	/	/	2023-07-25
12	Gold metal pin	BL	BL	BL	BL	/	/	2023-07-25
13	Black plastic fixing parts	BL	BL	BL	BL	BL	BL	2023-07-25
14	Silver metal sheet	BL	BL	BL	BL	/	/	2023-07-25
15	Black foam adhesive	BL	BL	BL	BL	BL	BL	2023-07-25
16	Colorless transparent glass with black coating	BL	BL	BL	BL	BL	BL	2023-07-25
17	Black plastic tape	BL	BL	BL	BL	BL	BL	2023-07-25
18	White plastic film	BL	BL	BL	BL	BL	BL	2023-07-25
19	Colorless transparent plastic board	BL	BL	BL	BL	BL	BL	2023-07-25
20	Silver plastic film	BL	BL	BL	BL	BL	BL	2023-07-25
21	White body (LED)	BL	BL	BL	BL	BL	BL	2023-07-25
22	White FPC	BL	BL	BL	BL	BL	BL	2023-07-25
23	Silver plastic film	BL	BL	BL	BL	BL	BL	2023-07-25
24	Silver plastic film	BL	BL	BL	BL	BL	BL	2023-07-25
25	Grey plastic frame	BL	BL	BL	BL	BL	BL	2023-07-25



Shenzhen LCS Compliance Testing Laboratory Ltd.

Add: 901, No.40 Building, Xialang Industrial Zone, Heshuikou Community, Matian Street, Guangming District, Shenzhen, Guangdong, China

Tel: +(86) 0755-82591330 | E-mail: webmaster@lcs-cert.com | Web: www.lcs-cert.com

Scan code to check authenticity



Sample No.	Sample Description	Screening Result(s)						Date of sample submission/ Resubmission
		Cd	Pb	Hg	Cr [▼]	Br [▼]		
						PBBs	PBDEs	
26	Silver metal screw	BL	BL	BL	BL	/	/	2023-07-25
27	Silver metal plate	BL	OL	BL	BL	/	/	2023-07-25
28	Silver metal fixing parts	BL	BL	BL	X	/	/	2023-07-25
29	Black plated silver metal screw	BL	BL	BL	X	/	/	2023-07-25
30	Black plastic shell	BL	BL	BL	BL	BL	BL	2023-07-25
31	Gold metal nut	BL	BL	BL	BL	/	/	2023-07-25
32	Pink substance	BL	BL	BL	BL	BL	BL	2023-07-25
33	Copper colored metal film	BL	BL	BL	BL	/	/	2023-07-25
34	Yellow FPC	BL	BL	BL	BL	BL	BL	2023-07-25
35	Silver crystal oscillator	BL	BL	BL	BL	/	/	2023-07-25
36	Black plastic sheet	BL	BL	BL	BL	BL	BL	2023-07-25
37	Black plastic sheet	BL	BL	BL	BL	BL	BL	2023-07-25
38	Black soft plastic sleeve	BL	BL	BL	BL	BL	BL	2023-07-25
39	White dry adhesive	BL	BL	BL	BL	BL	BL	2023-07-25
40	Gold metal port housing	BL	BL	BL	BL	/	/	2023-07-25
41	Black plastic wire cover	BL	BL	BL	BL	BL	BL	2023-07-25
42	Silver metal wire core	BL	BL	BL	BL	/	/	2023-07-25
43	Grey plastic wire cover	BL	BL	BL	BL	BL	BL	2023-07-25
44	Black body (IC)	BL	BL	BL	BL	BL	BL	2023-07-25
45	Silver metal pins	BL	BL	BL	BL	/	/	2023-07-25
46	Brown body (SMD capacitor)	BL	BL	BL	BL	BL	BL	2023-07-25
47	Gold metal port housing	BL	BL	BL	BL	/	/	2023-07-25
48	Silver metal sheet	BL	BL	BL	BL	/	/	2023-07-25
49	Black body (IC)	BL	BL	BL	BL	BL	BL	2023-07-25
50	Black body (diode)	BL	BL	BL	BL	BL	BL	2023-07-25
51	Silver metal port housing	BL	BL	BL	X	/	/	2023-07-25
52	Silver metal sheet	BL	BL	BL	X	/	/	2023-07-25
53	Black plastic sheet	BL	BL	BL	BL	BL	BL	2023-07-25
54	Silver metal pins	BL	BL	BL	BL	/	/	2023-07-25
55	Gold metal pin	BL	BL	BL	BL	/	/	2023-07-25



Shenzhen LCS Compliance Testing Laboratory Ltd.

Add: 901, No.40 Building, Xialang Industrial Zone, Heshuikou Community, Matian Street, Guangming District, Shenzhen, Guangdong, China

Tel: +(86) 0755-82591330 | E-mail: webmaster@lcs-cert.com | Web: www.lcs-cert.com

Scan code to check authenticity



Sample No.	Sample Description	Screening Result(s)						Date of sample submission/ Resubmission
		Cd	Pb	Hg	Cr [▼]	Br [▼]		
						PBBs	PBDEs	
56	Green PCB board	BL	BL	BL	BL	BL	BL	2023-07-25
57	Black plastic fixing parts	BL	BL	BL	BL	BL	BL	2023-07-25
58	Gold metal pin	BL	BL	BL	BL	/	/	2023-07-25
59	Silver metal pins	BL	BL	BL	BL	/	/	2023-07-25
60	Black foam adhesive	BL	BL	BL	BL	BL	BL	2023-07-25
61	Silver metal pin	BL	BL	BL	BL	/	/	2023-07-25
62	Black plastic sheet	BL	BL	BL	BL	BL	BL	2023-07-25
63	Black plastic port housing	BL	BL	BL	BL	BL	BL	2023-07-25
64	Colorless transparent glass lenses	BL	BL	BL	BL	BL	BL	2023-07-25
65	Black plastic shell	BL	BL	BL	BL	BL	BL	2023-07-25
66	Colorless transparent plastic sheet	BL	BL	BL	BL	BL	BL	2023-07-25
67	Black plated silver metal washer	BL	BL	BL	BL	/	/	2023-07-25
68	Black plated silver metal washer	BL	BL	BL	BL	/	/	2023-07-25
69	Colorless transparent plastic sheet	BL	BL	BL	BL	BL	BL	2023-07-25
70	Black plastic frame	BL	BL	BL	BL	BL	BL	2023-07-25
71	Stained glass sheet	BL	BL	BL	BL	BL	BL	2023-07-25
72	Black PCB board	BL	BL	BL	BL	BL	BL	2023-07-25
73	Black soft plastic sleeve	BL	BL	BL	BL	BL	BL	2023-07-25
74	White body (LED)	BL	BL	BL	BL	BL	BL	2023-07-25
75	Black plastic frame	BL	BL	BL	BL	BL	BL	2023-07-25
76	Yellow body (LED)	BL	BL	BL	BL	BL	BL	2023-07-25
77	Silver metal shell	BL	BL	BL	BL	/	/	2023-07-25
78	Silver metal wire core	BL	BL	BL	BL	/	/	2023-07-25
79	Black plastic wire cover	BL	BL	BL	BL	BL	BL	2023-07-25
80	Red plastic wire cover	BL	BL	BL	BL	BL	BL	2023-07-25
81	Colorless transparent plastic board with black coating	BL	BL	BL	BL	BL	BL	2023-07-25
82	Silver metal plate with white coating	BL	BL	BL	BL	/	/	2023-07-25
83	Silver metal plate	BL	BL	BL	BL	/	/	2023-07-25
84	Colorless transparent glass sheet	BL	BL	BL	BL	BL	BL	2023-07-25



Shenzhen LCS Compliance Testing Laboratory Ltd.

Add: 901, No.40 Building, Xialang Industrial Zone, Heshuikou Community, Matian Street, Guangming District, Shenzhen, Guangdong, China

Tel: +(86) 0755-82591330 | E-mail: webmaster@lcs-cert.com | Web: www.lcs-cert.com

Scan code to check authenticity



Sample No.	Sample Description	Screening Result(s)						Date of sample submission/ Resubmission
		Cd	Pb	Hg	Cr [▼]	Br [▼]		
						PBBs	PBDEs	
85	Colorless transparent plastic lampshade	BL	BL	BL	BL	BL	BL	2023-07-25
86	Red plastic wire cover	BL	BL	BL	BL	BL	BL	2023-07-25
87	Silver metal wire core	BL	BL	BL	BL	/	/	2023-07-25
88	Silver plastic film	BL	BL	BL	BL	BL	BL	2023-07-25
89	Silver metal shell	BL	BL	BL	BL	/	/	2023-07-25
90	White adhesive	BL	BL	BL	BL	BL	BL	2023-07-25
91	Black plastic wire cover	BL	BL	BL	BL	BL	BL	2023-07-25
92	Silver metal shell	BL	BL	BL	BL	/	/	2023-07-25
93	Black plastic shell	BL	BL	BL	BL	BL	BL	2023-07-25
94	Copper colored wire	BL	BL	BL	BL	/	/	2023-07-25
95	Colorless transparent plastic film	BL	BL	BL	BL	BL	BL	2023-07-25
96	Black plastic card slot	BL	BL	BL	BL	BL	BL	2023-07-25
97	Silver metal sheet	BL	BL	BL	BL	/	/	2023-07-25
98	Silver metal frame with gray coating	BL	BL	BL	BL	/	/	2023-07-25
99	Silver metal shell	BL	BL	BL	BL	/	/	2023-07-25
100	Black plastic tape	BL	BL	BL	BL	BL	BL	2023-07-25
101	Silver metal shell	BL	BL	BL	BL	/	/	2023-07-25
102	Black body (SMD resistor)	BL	BL	BL	BL	BL	BL	2023-07-25
103	Grey soft plastic pad	BL	BL	BL	BL	BL	BL	2023-07-25
104	Soldering tin	BL	BL	BL	BL	/	/	2023-07-25
105	Silver glass body	BL	BL	BL	BL	BL	BL	2023-07-25
106	Black body (IC)	BL	BL	BL	BL	BL	BL	2023-07-25
107	Black body (IC)	BL	BL	BL	BL	BL	BL	2023-07-25
108	Grey core (inductance)	BL	BL	BL	BL	/	/	2023-07-25
109	Black body (IC)	BL	BL	BL	BL	BL	BL	2023-07-25
110	Silver metal pin	BL	BL	BL	BL	/	/	2023-07-25
111	Black plastic frame	BL	BL	BL	BL	BL	BL	2023-07-25
112	Silver metal shell	BL	BL	BL	X	/	/	2023-07-25
113	Silver metal sheet	BL	BL	BL	BL	/	/	2023-07-25
114	Silver metal sheet	BL	BL	BL	BL	/	/	2023-07-25
115	Black plastic fixing parts	BL	BL	BL	BL	BL	BL	2023-07-25



Shenzhen LCS Compliance Testing Laboratory Ltd.

Add: 901, No.40 Building, Xialang Industrial Zone, Heshuikou Community, Matian Street, Guangming District, Shenzhen, Guangdong, China

Tel: +(86) 0755-82591330 | E-mail: webmaster@lcs-cert.com | Web: www.lcs-cert.com

Scan code to check authenticity



Sample No.	Sample Description	Screening Result(s)						Date of sample submission/ Resubmission
		Cd	Pb	Hg	Cr [▼]	Br [▼]		
						PBBs	PBDEs	
116	Black foam adhesive	BL	BL	BL	BL	BL	BL	2023-07-25
117	Silver metal wire core	BL	BL	BL	BL	/	/	2023-07-25
118	Red plastic wire cover	BL	BL	BL	BL	BL	BL	2023-07-25
119	Blue plastic wire cover	BL	BL	BL	BL	BL	BL	2023-07-25
120	Silver metal sheet	BL	BL	BL	BL	/	/	2023-07-25
121	Gold metal shaft	BL	BL	BL	BL	/	/	2023-07-25
122	Green plastic board	BL	BL	BL	BL	BL	BL	2023-07-25
123	Copper colored wire	BL	BL	BL	BL	/	/	2023-07-25
124	Silver metal magnet	BL	BL	BL	BL	/	/	2023-07-25
125	Silver metal shell	BL	BL	BL	BL	/	/	2023-07-25
126	Silver metal shell	BL	BL	BL	BL	/	/	2023-07-25
127	Silver metal shell	BL	BL	BL	BL	/	/	2023-07-25
128	Black plastic shell	BL	BL	BL	BL	BL	BL	2023-07-25
129	Colorless transparent glass sheet	BL	BL	BL	BL	BL	BL	2023-07-25
130	Black plastic board	BL	BL	BL	BL	BL	BL	2023-07-25
131	Colorless transparent plastic sheet	BL	BL	BL	BL	BL	BL	2023-07-25
132	Black plastic shell	BL	BL	BL	BL	BL	BL	2023-07-25
133	Colorless transparent plastic sheet	BL	BL	BL	BL	BL	BL	2023-07-25
134	Silver metal shell	BL	BL	BL	BL	/	/	2023-07-25
135	Silver metal shell	BL	BL	BL	BL	/	/	2023-07-25
136	Silver metal pins	BL	BL	BL	BL	/	/	2023-07-25
137	Black body (IC)	BL	BL	BL	BL	BL	BL	2023-07-25
138	Black body (IC)	BL	BL	BL	BL	BL	BL	2023-07-25
139	Black body (IC)	BL	BL	BL	BL	BL	BL	2023-07-25
140	Black body (IC)	BL	BL	BL	BL	BL	BL	2023-07-25
141	Black body (IC)	BL	BL	BL	BL	BL	BL	2023-07-25
142	Black PCB board	BL	BL	BL	BL	BL	BL	2023-07-25
143	Soldering tin	BL	BL	BL	BL	/	/	2023-07-25
144	Colorless transparent plastic film	BL	BL	BL	BL	BL	BL	2023-07-25
145	Black printed silver label	BL	BL	BL	BL	BL	BL	2023-07-25
146	Black plastic tape	BL	BL	BL	BL	BL	BL	2023-07-25
147	Black FPC	BL	BL	BL	BL	BL	BL	2023-07-25



Shenzhen LCS Compliance Testing Laboratory Ltd.

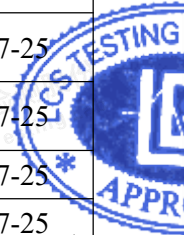
Add: 901, No.40 Building, Xialang Industrial Zone, Heshuikou Community, Matian Street, Guangming District, Shenzhen, Guangdong, China

Tel: +(86) 0755-82591330 | E-mail: webmaster@lcs-cert.com | Web: www.lcs-cert.com

Scan code to check authenticity



Sample No.	Sample Description	Screening Result(s)						Date of sample submission/ Resubmission
		Cd	Pb	Hg	Cr ^{VI}	Br [▼]		
						PBBs	PBDEs	
148	White plastic fixing parts	BL	BL	BL	BL	BL	BL	2023-07-25
149	Silver metal pin	BL	BL	BL	BL	/	/	2023-07-25
150	White plastic sheet	BL	BL	BL	BL	BL	BL	2023-07-25
151	Silver metal port housing	BL	BL	BL	BL	/	/	2023-07-25
152	White soft plastic plug housing	BL	BL	BL	BL	BL	BL	2023-07-25
153	Soldering tin	BL	BL	BL	BL	/	/	2023-07-25
154	White plastic wire cover (outer)	BL	BL	BL	BL	BL	BL	2023-07-25
155	Red plastic wire cover	BL	BL	BL	BL	BL	BL	2023-07-25
156	Black plastic wire cover	BL	BL	BL	BL	BL	BL	2023-07-25
157	Copper colored metal wire core	BL	BL	BL	BL	/	/	2023-07-25
158	White plastic wire cover	BL	BL	BL	BL	BL	BL	2023-07-25
159	Green plastic wire cover	BL	BL	BL	BL	BL	BL	2023-07-25
160	White plastic fixing parts	BL	BL	BL	BL	BL	BL	2023-07-25
161	Silver metal pins	BL	BL	BL	BL	/	/	2023-07-25
162	Silver metal pin	BL	BL	BL	BL	/	/	2023-07-25
163	Black plastic fixing parts	BL	BL	BL	BL	BL	BL	2023-07-25
164	White plastic shell	BL	BL	BL	BL	BL	BL	2023-07-25
165	Silver metal port housing	BL	BL	BL	BL	/	/	2023-07-25



Note:

- Results were obtained by XRF for primary screening, and further chemical testing by ICP(for Cd, Pb, Hg), UV-Vis(for Cr(VI)) and GC-MS(for PBBs, PBDEs) are recommended to be performed, if the concentration exceeds the below warning value according to IEC 62321-3-1:2013(Unit: mg/kg).

Element	Polymers	Metals	Composite material
Cd	$BL \leq (70-3\sigma) < X < (130+3\sigma) \leq OL$	$BL \leq (70-3\sigma) < X < (130+3\sigma) \leq OL$	$LOD < X < (150+3\sigma) \leq OL$
Pb	$BL \leq (700-3\sigma) < X < (1300+3\sigma) \leq OL$	$BL \leq (700-3\sigma) < X < (1300+3\sigma) \leq OL$	$BL \leq (500-3\sigma) < X < (1500+3\sigma) \leq OL$
Hg	$BL \leq (700-3\sigma) < X < (1300+3\sigma) \leq OL$	$BL \leq (700-3\sigma) < X < (1300+3\sigma) \leq OL$	$BL \leq (500-3\sigma) < X < (1500+3\sigma) \leq OL$
Cr	$BL \leq (700-3\sigma) < X$	$BL \leq (700-3\sigma) < X$	$BL \leq (500-3\sigma) < X$
Br	$BL \leq (300-3\sigma) < X$	N/A	$BL \leq (250-3\sigma) < X$





Remark:

- BL= Below Limit
 - OL= Over Limit
 - X= The range of needing to do further testing
 - 3σ= The reproducibility of analytical instruments
 - N/A= Not applicable
 - LOD= Detection limit
2. The XRF screening test for RoHS elements – The reading may be different to the actual content in the sample be of non-uniformity composition.
 3. The maximum permissible limit is quoted from the document RoHS Directive 2011/65/EU with amendment (EU) 2015/863.
 4. ▼=For restricted substances PBBs and PBDEs, the results show the total Br content, the restricted substance was Cr(VI), and the results showed the total Cr content.

RoHS Restricted Substances	Maximum Concentration Value (mg/kg) (by weight in homogenous materials)
Cadmium(Cd)	100
Lead(Pb)	1000
Mercury(Hg)	1000
Hexavalent Chromium(Cr(VI))	1000
Polybrominated biphenyls(PBBs)	1000
Polybrominated diphenylethers(PBDEs)	1000
Dibutyl Phthalate(DBP)	1000
Butylbenzyl Phthalate(BBP)	1000
Di-(2-ethylhexyl) Phthalate(DEHP)	1000
Diisobutyl phthalate(DIBP)	1000

Disclaimers:

This XRF Screening report is for reference purposes only. The applicant shall make its/his/her own judgment as to whether the information provided in this XRF screening report is sufficient for its/his/her purposes. The result shown in this XRF screening report will differ based on various factors, including but not limited to, the sample size, thickness, area, surface flatness, equipment parameters and matrix effect (e.g. plastic, rubber, metal, glass, ceramic etc.). Further wet chemical pre-treatment with relevant chemical equipment analysis are required to obtain quantitative data.





B. EU RoHS Directive 2011/65/EU with amendment (EU) 2015/863 on Lead(Pb), Cadmium(Cd), Mercury(Hg), Hexavalent Chromium(Cr(VI)), PBBs, PBDEs, DBP, BBP, DEHP & DIBP content

Test method:

Lead(Pb) & Cadmium(Cd) Content:

Refer to IEC 62321-5:2013, by acid digestion and analysis was performed by inductively coupled plasma optical emission spectrometer (ICP-OES) or atomic absorption spectrometer (AAS).

Mercury(Hg) Content:

Refer to IEC 62321-4:2013+AMD1:2017 CSV, by acid digestion and analysis was performed by inductively coupled plasma optical emission spectrometer (ICP-OES).

Hexavalent Chromium(Cr(VI)) Content:

Refer to IEC 62321-7-1:2015 or IEC 62321-7-2:2017, analysis was performed by UV-visible spectrophotometer (UV-Vis).

PBBs & PBDEs Content:

Refer to IEC 62321-6:2015, by solvent extraction and analysis was performed by gas chromatography-mass spectrometer (GC-MS).

Phthalates(DBP, BBP, DEHP & DIBP) Content:

Refer to IEC 62321-8:2017, by solvent extraction and analysis was performed by gas chromatography-mass spectrometer (GC-MS).

Test result(s):

1) Lead(Pb) & Cadmium(Cd)

Tested Item	MDL (mg/kg)	Test Result(s) (mg/kg)		Limit (mg/kg)
		(27)		
Lead(Pb) Content	5	294		1000

Tested Item	MDL (mg/kg)	Test Result(s) (mg/kg)		Limit (mg/kg)
		(2)		
Cadmium(Cd) Content	5	N.D.		100

2) Hexavalent Chromium(Cr(VI)(for coating on metal)

Tested Item	MDL (µg/cm ²)	Test Result(s) (µg/cm ²)				Limit (µg/cm ²)
		(4)	(11)	(28)	(29)	
Hexavalent Chromium(Cr(VI)) Content★	0.10 (LOQ)	N.D.	N.D.	N.D.	N.D.	1000

Tested Item	MDL (µg/cm ²)	Test Result(s) (µg/cm ²)			Limit (µg/cm ²)
		(51)	(52)	(112)	
Hexavalent Chromium(Cr(VI)) Content★	0.10 (LOQ)	N.D.	N.D.	N.D.	1000



Shenzhen LCS Compliance Testing Laboratory Ltd.

Add: 901, No.40 Building, Xialang Industrial Zone, Heshuikou Community, Matian Street, Guangming District, Shenzhen, Guangdong, China

Tel: +(86) 0755-82591330 | E-mail: webmaster@lcs-cert.com | Web: www.lcs-cert.com

Scan code to check authenticity

**3) Phthalates(DBP, BBP, DEHP &DIBP)**

Tested Item(s)	MDL (mg/kg)	Test Result(s) (mg/kg)	Limit (mg/kg)
		1	
Dibutyl Phthalate(DBP) Content	50	N.D.	1000
Butylbenzyl Phthalate(BBP) Content	50	N.D.	1000
Di-(2-ethylhexyl) Phthalate(DEHP) Content	50	N.D.	1000
Diisobutyl phthalate(DIBP) Content	50	N.D.	1000

Tested Item(s)	MDL (mg/kg)	Test Result(s) (mg/kg)	Limit (mg/kg)
		7+8+9+10+13+15	
Dibutyl Phthalate(DBP) Content	50	N.D.	1000
Butylbenzyl Phthalate(BBP) Content	50	N.D.	1000
Di-(2-ethylhexyl) Phthalate(DEHP) Content	50	N.D.	1000
Diisobutyl phthalate(DIBP) Content	50	N.D.	1000

Tested Item(s)	MDL (mg/kg)	Test Result(s) (mg/kg)	Limit (mg/kg)
		16+17+18+19+20+21	
Dibutyl Phthalate(DBP) Content	50	N.D.	1000
Butylbenzyl Phthalate(BBP) Content	50	N.D.	1000
Di-(2-ethylhexyl) Phthalate(DEHP) Content	50	N.D.	1000
Diisobutyl phthalate(DIBP) Content	50	N.D.	1000

Tested Item(s)	MDL (mg/kg)	Test Result(s) (mg/kg)	Limit (mg/kg)
		22+23+24+25+30+32	
Dibutyl Phthalate(DBP) Content	50	N.D.	1000
Butylbenzyl Phthalate(BBP) Content	50	N.D.	1000
Di-(2-ethylhexyl) Phthalate(DEHP) Content	50	N.D.	1000
Diisobutyl phthalate(DIBP) Content	50	N.D.	1000





Tested Item(s)	MDL (mg/kg)	Test Result(s) (mg/kg)	Limit (mg/kg)
		34+36+37+38+39+41	
Dibutyl Phthalate(DBP) Content	50	N.D.	1000
Butylbenzyl Phthalate(BBP) Content	50	N.D.	1000
Di-(2-ethylhexyl) Phthalate(DEHP) Content	50	N.D.	1000
Diisobutyl phthalate(DIBP) Content	50	N.D.	1000

Tested Item(s)	MDL (mg/kg)	Test Result(s) (mg/kg)	Limit (mg/kg)
		43+44+46+49+50+53	
Dibutyl Phthalate(DBP) Content	50	N.D.	1000
Butylbenzyl Phthalate(BBP) Content	50	N.D.	1000
Di-(2-ethylhexyl) Phthalate(DEHP) Content	50	N.D.	1000
Diisobutyl phthalate(DIBP) Content	50	N.D.	1000

Tested Item(s)	MDL (mg/kg)	Test Result(s) (mg/kg)	Limit (mg/kg)
		56+57+60+62+63+64	
Dibutyl Phthalate(DBP) Content	50	N.D.	1000
Butylbenzyl Phthalate(BBP) Content	50	N.D.	1000
Di-(2-ethylhexyl) Phthalate(DEHP) Content	50	N.D.	1000
Diisobutyl phthalate(DIBP) Content	50	N.D.	1000

Tested Item(s)	MDL (mg/kg)	Test Result(s) (mg/kg)	Limit (mg/kg)
		65+66+69+70+71+72	
Dibutyl Phthalate(DBP) Content	50	N.D.	1000
Butylbenzyl Phthalate(BBP) Content	50	N.D.	1000
Di-(2-ethylhexyl) Phthalate(DEHP) Content	50	N.D.	1000
Diisobutyl phthalate(DIBP) Content	50	N.D.	1000





Tested Item(s)	MDL (mg/kg)	Test Result(s) (mg/kg)	Limit (mg/kg)
		73+74+75+76+79+80	
Dibutyl Phthalate(DBP) Content	50	N.D.	1000
Butylbenzyl Phthalate(BBP) Content	50	N.D.	1000
Di-(2-ethylhexyl) Phthalate(DEHP) Content	50	N.D.	1000
Diisobutyl phthalate(DIBP) Content	50	N.D.	1000

Tested Item(s)	MDL (mg/kg)	Test Result(s) (mg/kg)	Limit (mg/kg)
		81+84+85+86+88+90	
Dibutyl Phthalate(DBP) Content	50	N.D.	1000
Butylbenzyl Phthalate(BBP) Content	50	N.D.	1000
Di-(2-ethylhexyl) Phthalate(DEHP) Content	50	N.D.	1000
Diisobutyl phthalate(DIBP) Content	50	N.D.	1000

Tested Item(s)	MDL (mg/kg)	Test Result(s) (mg/kg)	Limit (mg/kg)
		91+93+95+96+100+102	
Dibutyl Phthalate(DBP) Content	50	N.D.	1000
Butylbenzyl Phthalate(BBP) Content	50	N.D.	1000
Di-(2-ethylhexyl) Phthalate(DEHP) Content	50	N.D.	1000
Diisobutyl phthalate(DIBP) Content	50	N.D.	1000

Tested Item(s)	MDL (mg/kg)	Test Result(s) (mg/kg)	Limit (mg/kg)
		103+105+106+107+109+111	
Dibutyl Phthalate(DBP) Content	50	N.D.	1000
Butylbenzyl Phthalate(BBP) Content	50	N.D.	1000
Di-(2-ethylhexyl) Phthalate(DEHP) Content	50	N.D.	1000
Diisobutyl phthalate(DIBP) Content	50	N.D.	1000





Tested Item(s)	MDL (mg/kg)	Test Result(s) (mg/kg)	Limit (mg/kg)
		115+116+118+119+122+128	
Dibutyl Phthalate(DBP) Content	50	N.D.	1000
Butylbenzyl Phthalate(BBP) Content	50	N.D.	1000
Di-(2-ethylhexyl) Phthalate(DEHP) Content	50	N.D.	1000
Diisobutyl phthalate(DIBP) Content	50	N.D.	1000

Tested Item(s)	MDL (mg/kg)	Test Result(s) (mg/kg)	Limit (mg/kg)
		129+130+131+132+133+137	
Dibutyl Phthalate(DBP) Content	50	N.D.	1000
Butylbenzyl Phthalate(BBP) Content	50	N.D.	1000
Di-(2-ethylhexyl) Phthalate(DEHP) Content	50	N.D.	1000
Diisobutyl phthalate(DIBP) Content	50	N.D.	1000

Tested Item(s)	MDL (mg/kg)	Test Result(s) (mg/kg)	Limit (mg/kg)
		138+139+140+141+142+144	
Dibutyl Phthalate(DBP) Content	50	N.D.	1000
Butylbenzyl Phthalate(BBP) Content	50	N.D.	1000
Di-(2-ethylhexyl) Phthalate(DEHP) Content	50	N.D.	1000
Diisobutyl phthalate(DIBP) Content	50	N.D.	1000

Tested Item(s)	MDL (mg/kg)	Test Result(s) (mg/kg)	Limit (mg/kg)
		145+146+147+148+150+152	
Dibutyl Phthalate(DBP) Content	50	N.D.	1000
Butylbenzyl Phthalate(BBP) Content	50	N.D.	1000
Di-(2-ethylhexyl) Phthalate(DEHP) Content	50	N.D.	1000
Diisobutyl phthalate(DIBP) Content	50	N.D.	1000





Tested Item(s)	MDL (mg/kg)	Test Result(s) (mg/kg)	Limit (mg/kg)
		154+155+156+158+159+160	
Dibutyl Phthalate(DBP) Content	50	N.D.	1000
Butylbenzyl Phthalate(BBP) Content	50	N.D.	1000
Di-(2-ethylhexyl) Phthalate(DEHP) Content	50	N.D.	1000
Diisobutyl phthalate(DIBP) Content	50	N.D.	1000

Tested Item(s)	MDL (mg/kg)	Test Result(s) (mg/kg)	Limit (mg/kg)
		163+164	
Dibutyl Phthalate(DBP) Content	50	N.D.	1000
Butylbenzyl Phthalate(BBP) Content	50	N.D.	1000
Di-(2-ethylhexyl) Phthalate(DEHP) Content	50	N.D.	1000
Diisobutyl phthalate(DIBP) Content	50	N.D.	1000

Note:

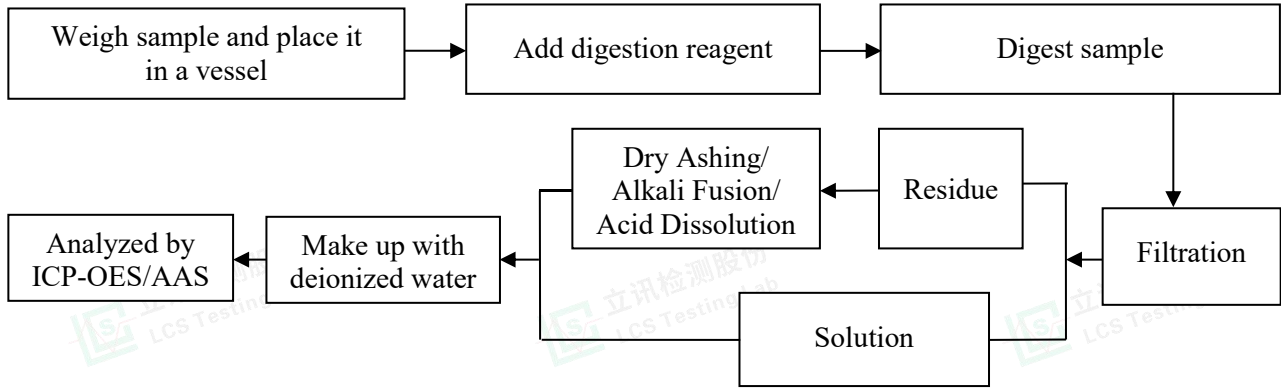
- MDL = Method Detection Limit
- N.D. = Not Detected (<MDL or LOQ)
- mg= milligram
- LOQ = Limit Of Quantification, The LOQ of Hexavalent chromium is 0.10 $\mu\text{g}/\text{cm}^2$
- ★ = a. The sample is positive for Cr(VI) if the Cr(VI) concentration is greater than 0.13 $\mu\text{g}/\text{cm}^2$. The sample coating is considered to contain Cr(VI).
b. The sample is negative for Cr(VI) if Cr(VI) is N.D.(concentration less than 0.10 $\mu\text{g}/\text{cm}^2$). The sample coating is considered a non- Cr(VI) based coating.
c. The result between 0.10 $\mu\text{g}/\text{cm}^2$ and 0.13 $\mu\text{g}/\text{cm}^2$ is considered to be inconclusive, unavoidable coating variations may influence the determination.
- Information on storage conditions and production date of the tested samples is unavailable and thus Cr(VI) results represent status of the sample at the time of testing.
- According to customer's requirement, only the appointed materials have been tested.



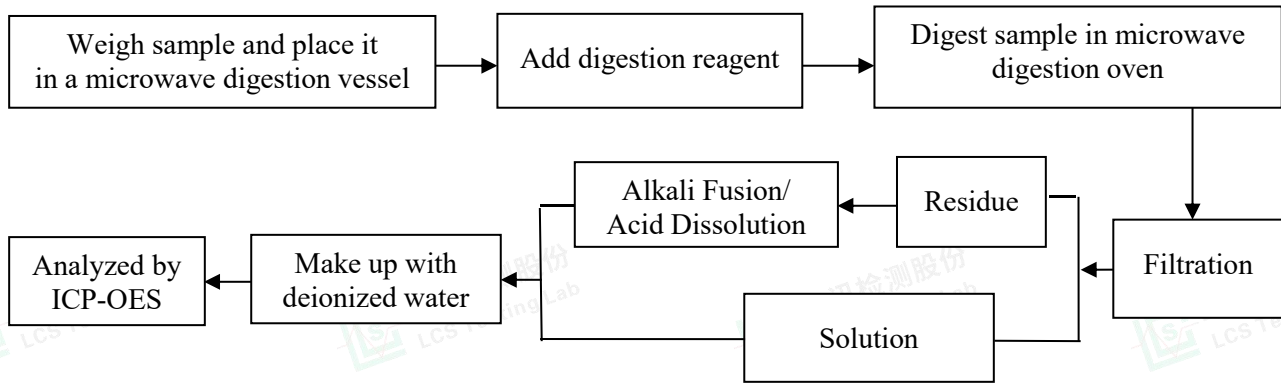


Test Process

1. Lead(Pb) & Cadmium(Cd): IEC 62321-5:2013

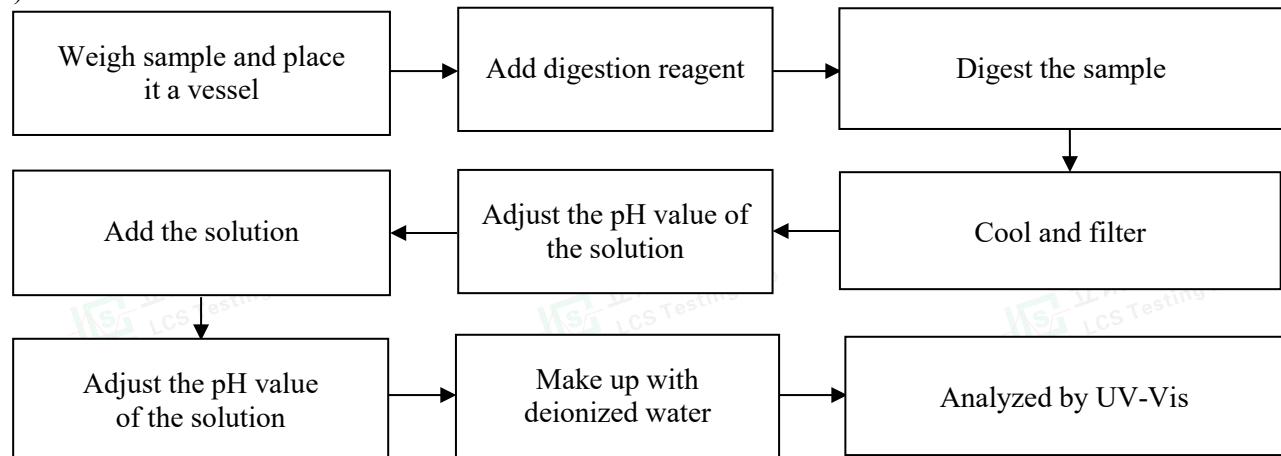


2. Mercury(Hg): IEC 62321-4:2013+AMD1:2017 CSV



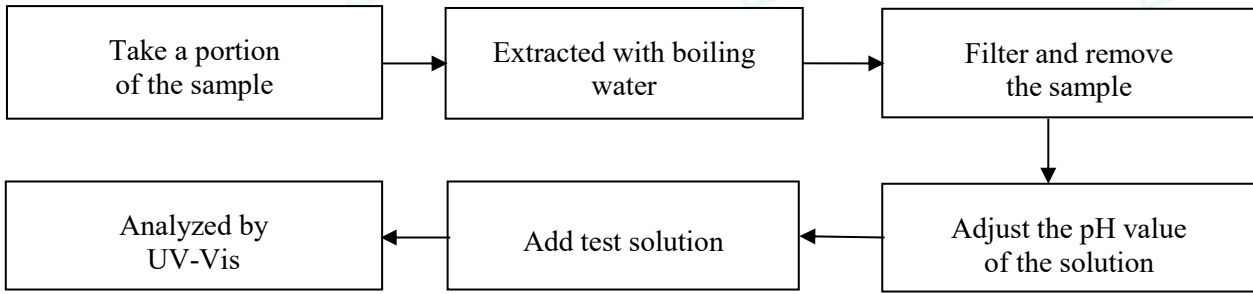
3. Hexavalent Chromium(Cr(VI))

1) IEC 62321-7-2:2017

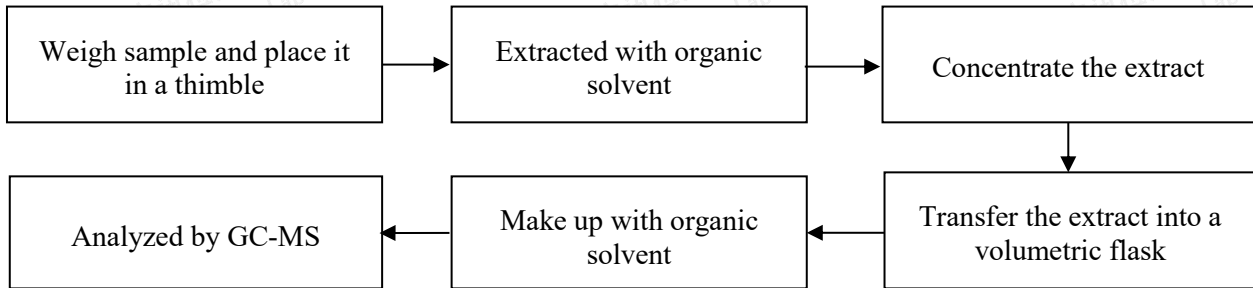




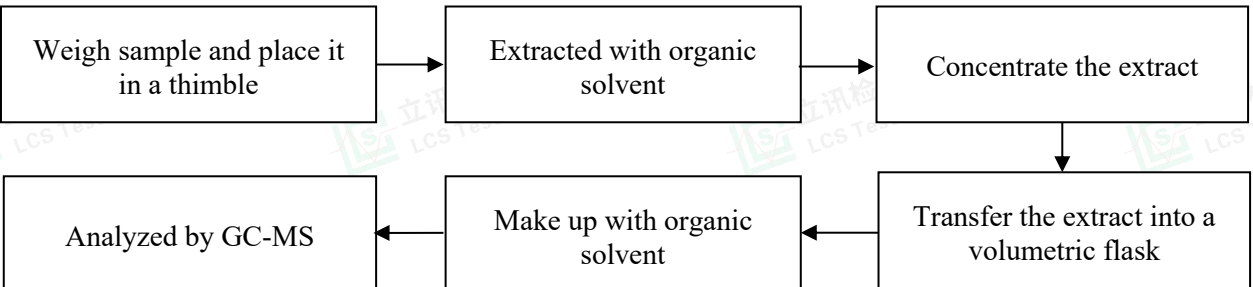
2) IEC 62321-7-1:2015



4. Polybrominated Biphenyls(PBBs) & Polybrominated Diphenyl Ethers(PBDEs) : IEC 62321-6:2015



5. Phthalates(DBP, BBP, DEHP & DIBP) : IEC 62321-8:2017

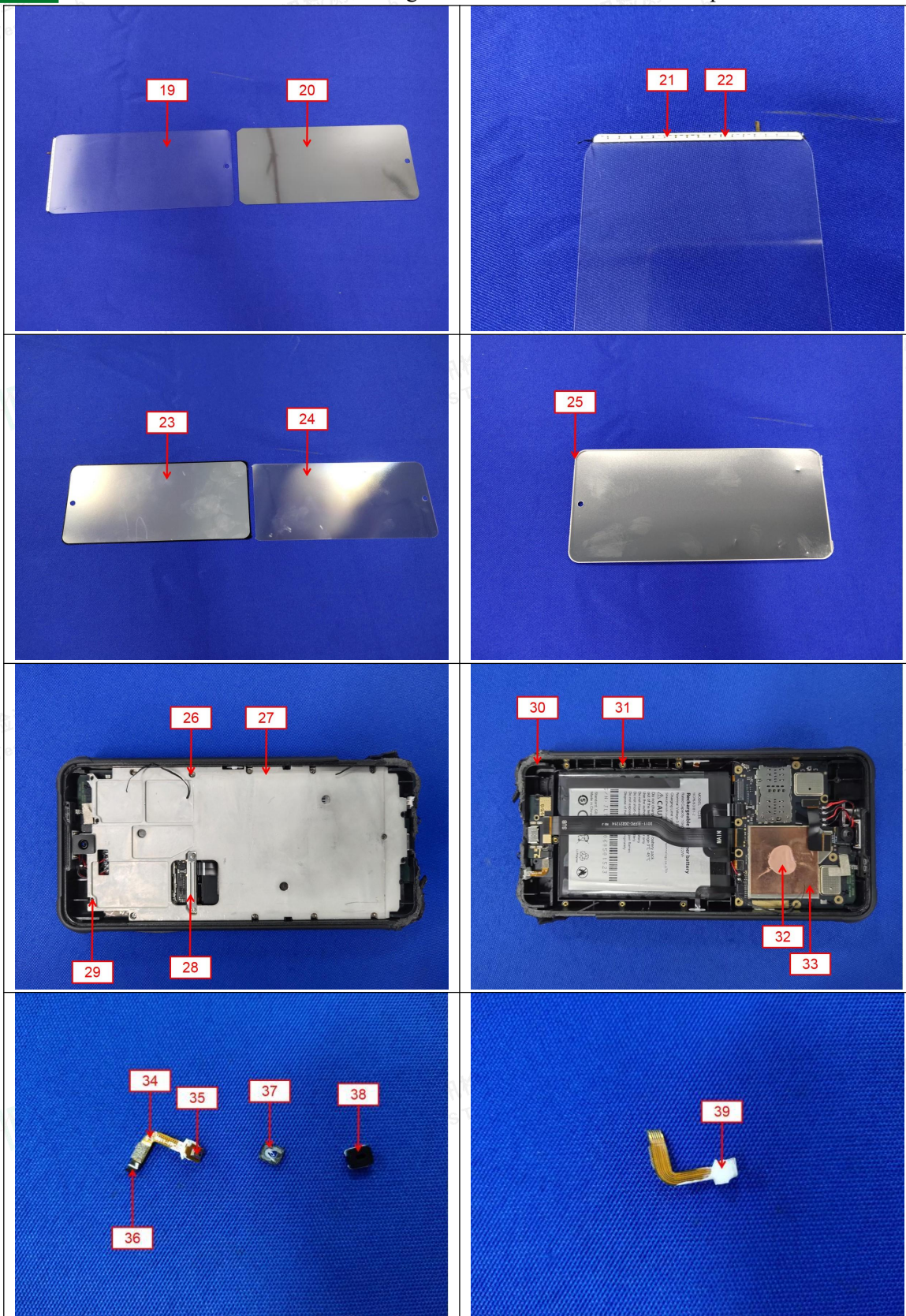


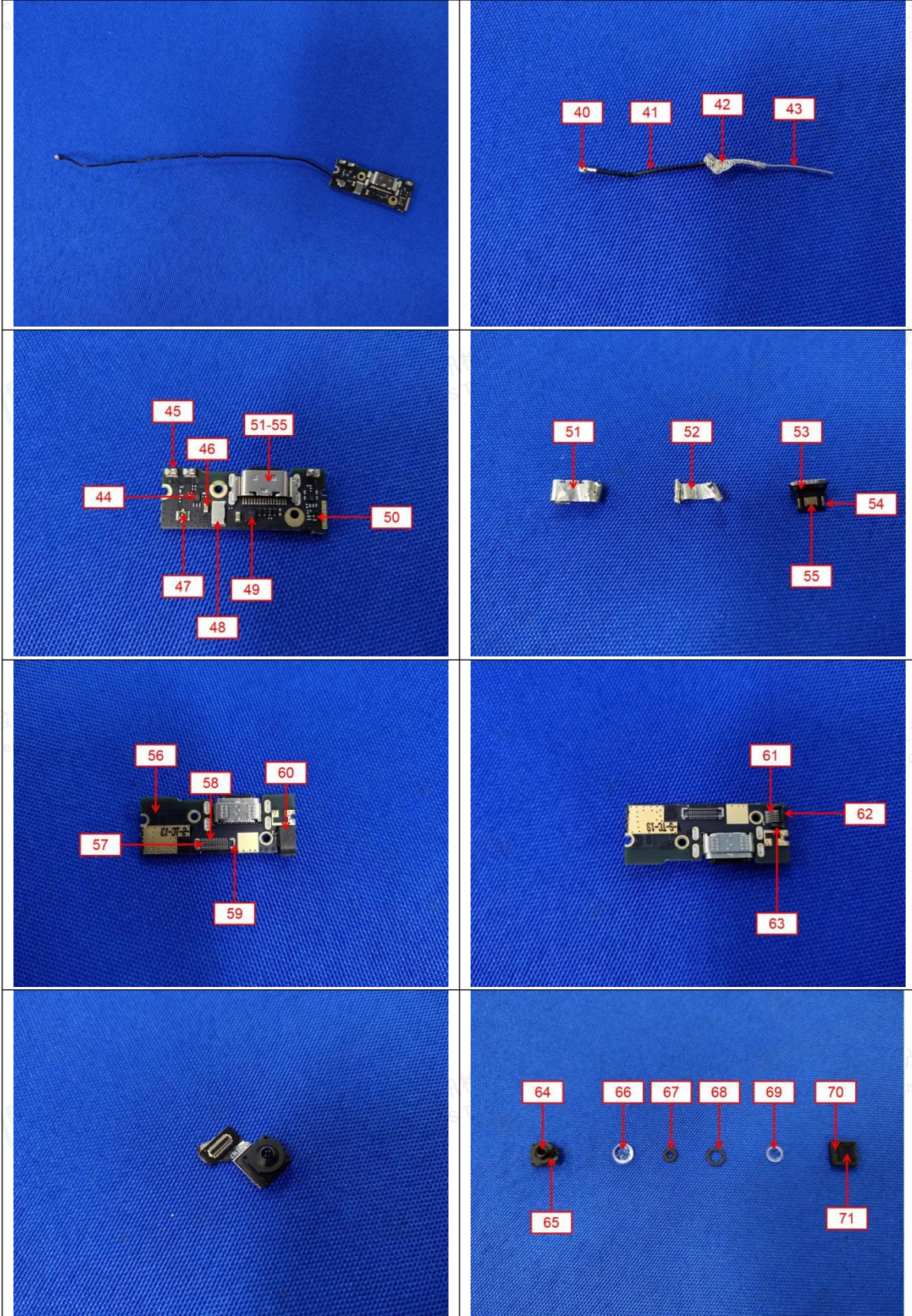


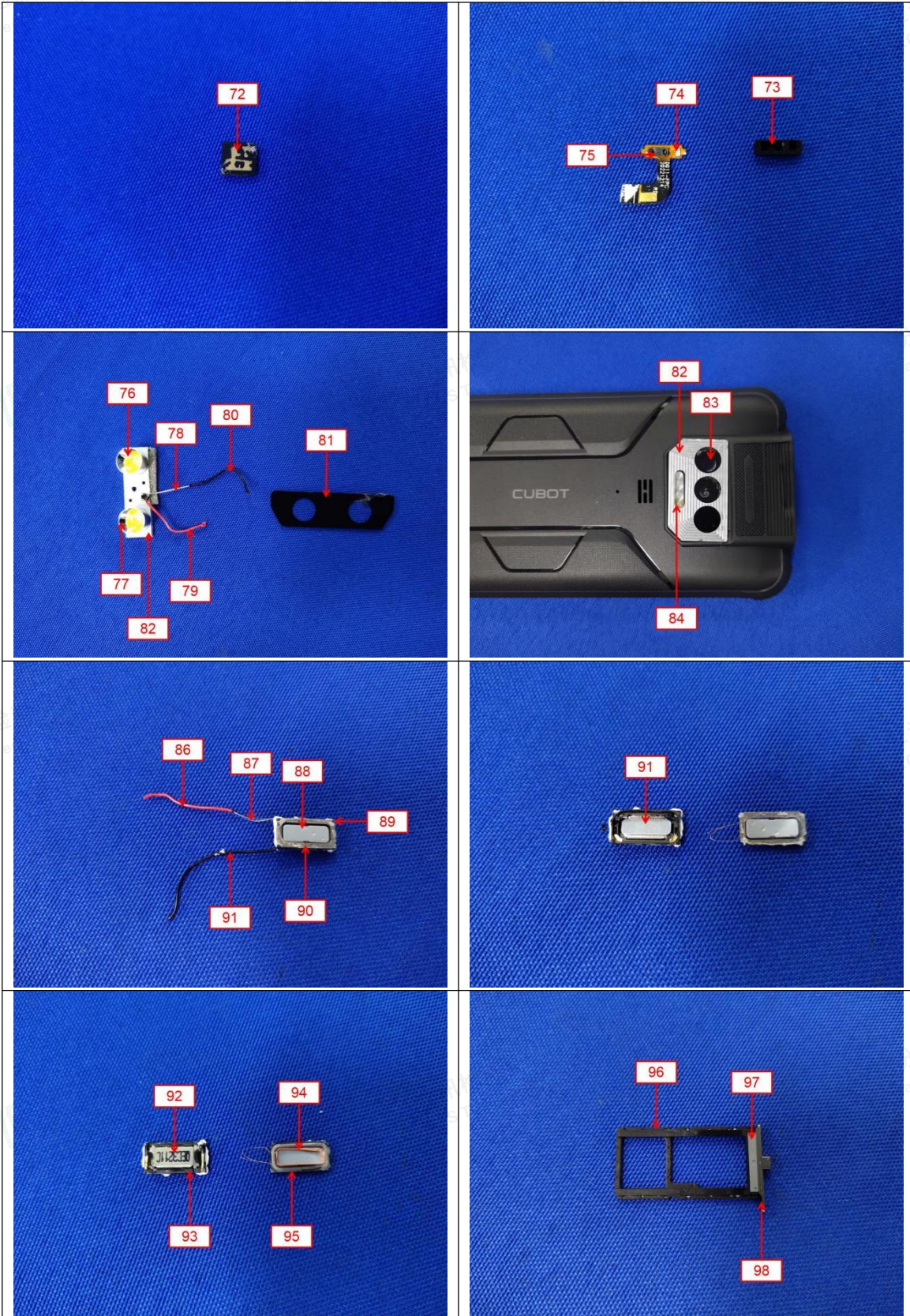
The photo(s) of the sample

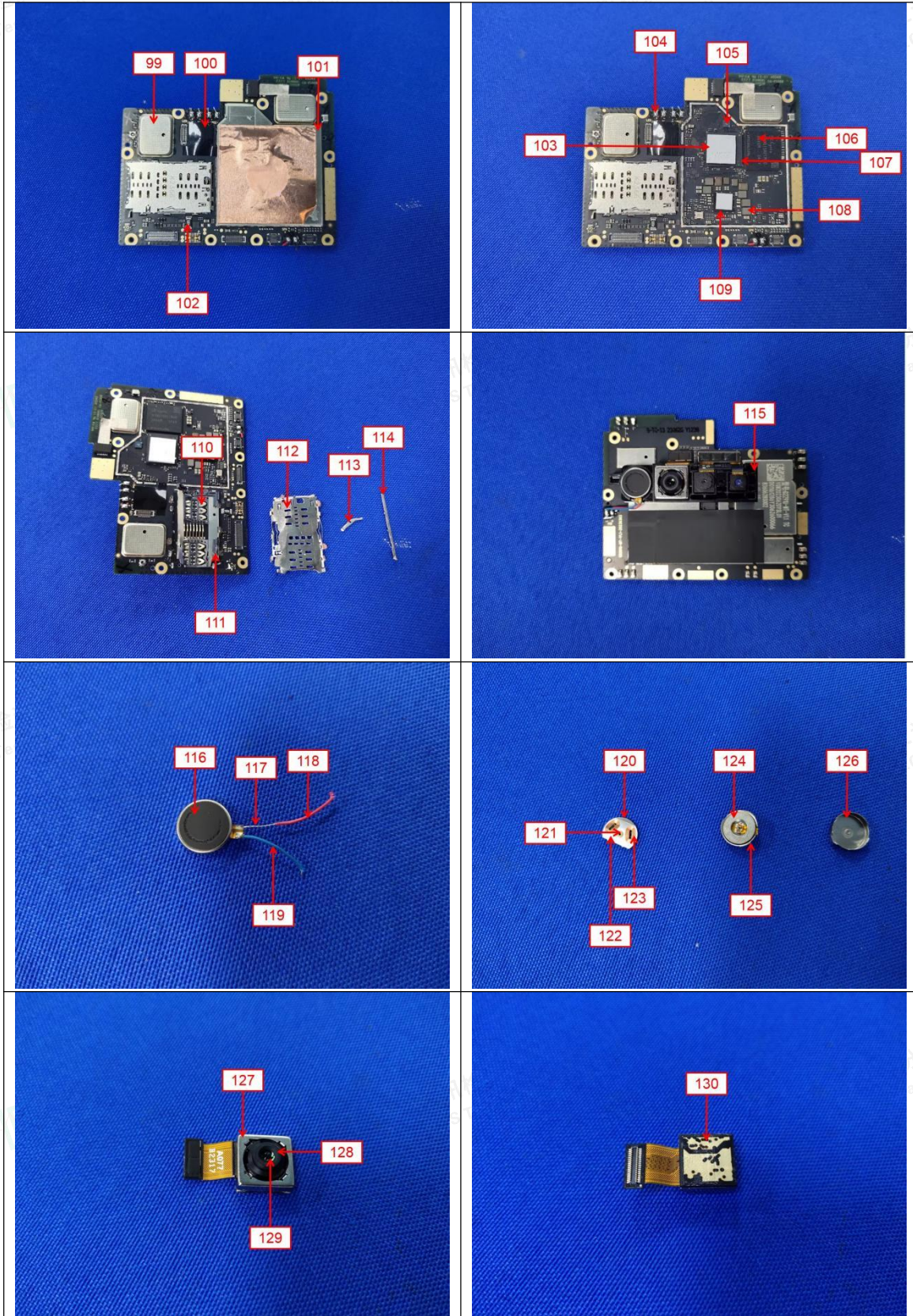


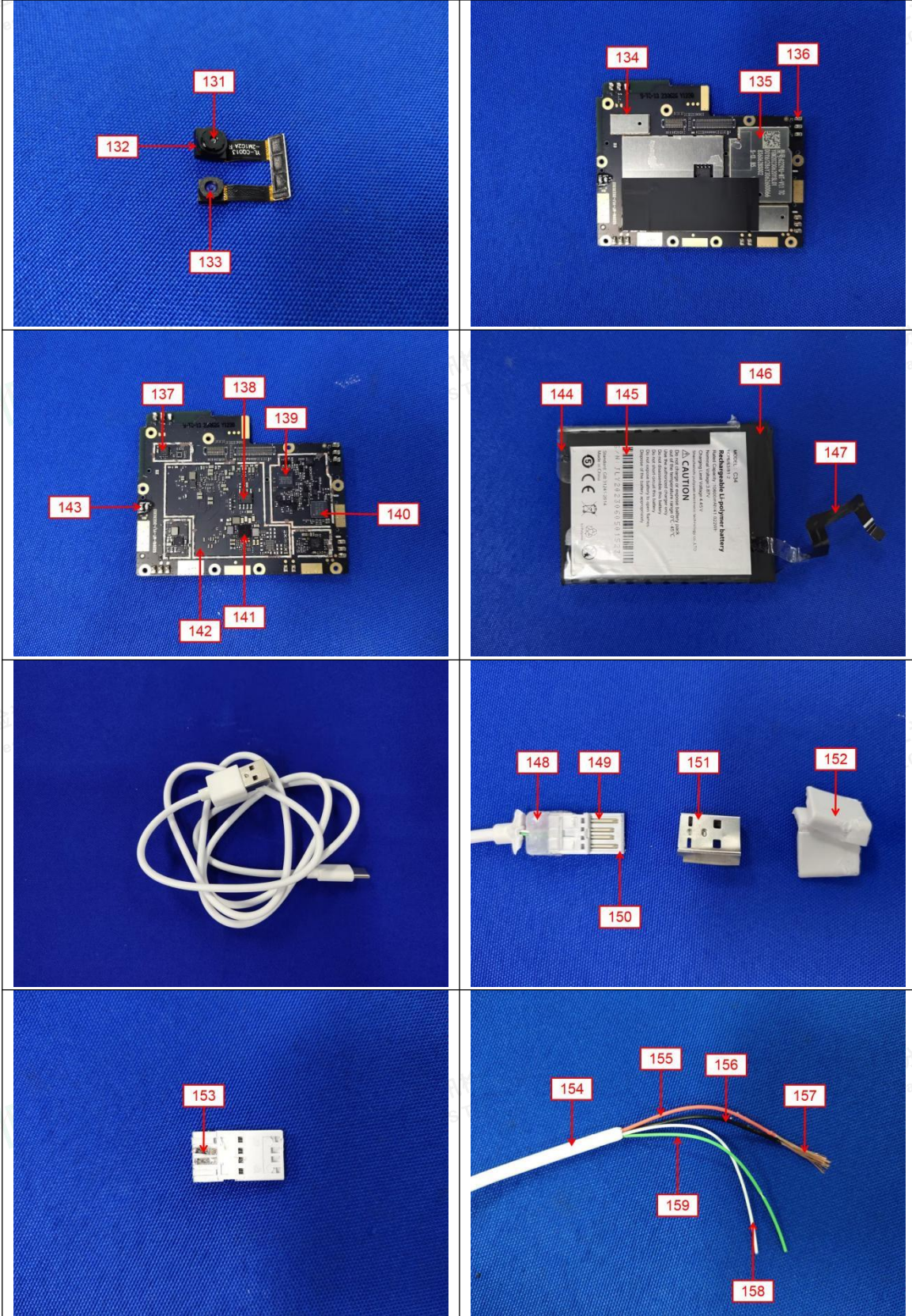


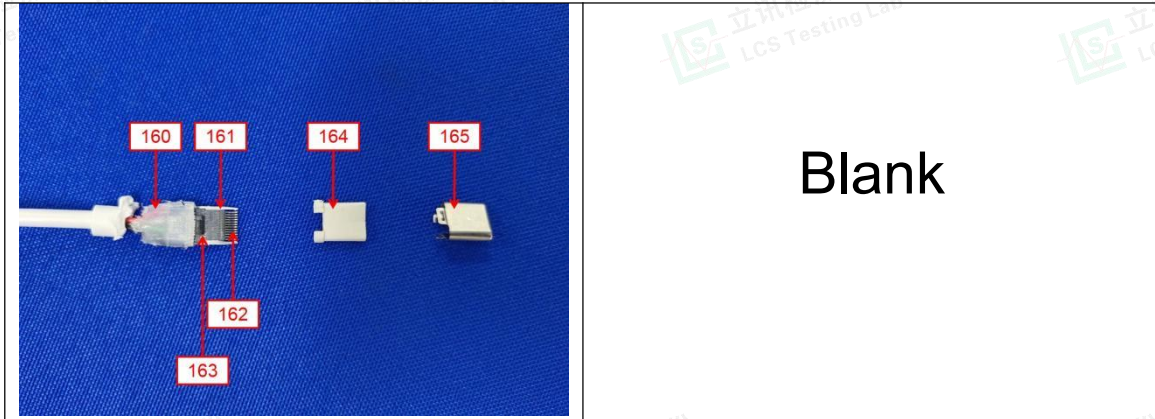












Statement:

1. The test report is invalid without the signature of the approver and the special seal for the company's report;
2. The company name, address and sample information shown on the report were provided by the applicant who should be responsible for the authenticity which are not verified by LCS;
3. The test results in this report are only responsible for the tested samples;
4. Without written approval of LCS, this report can't be reproduced except in full;
5. In case of any discrepancy between the corresponding Chinese and English contents in the test report, the Chinese version shall prevail.

*** End of Report ***

